

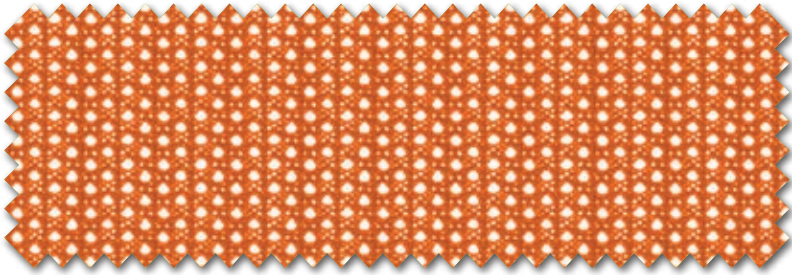


**7** KNITTED MESHES  
WOVEN FABRIC  
MEMBRANE 

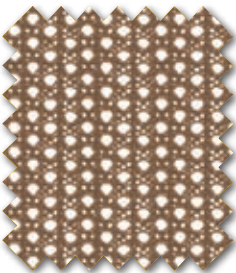
# NETZE GESTRICKT

## JOYCE<sup>IS3</sup>

interstuhl



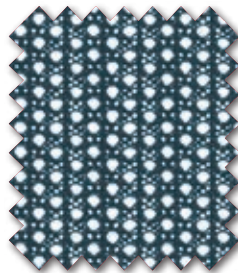
8213



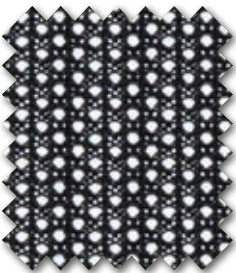
8225



8214



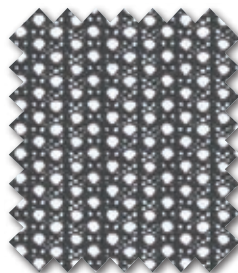
8272



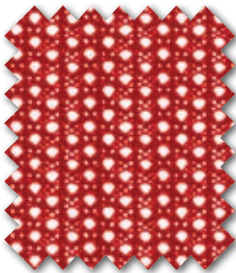
8240



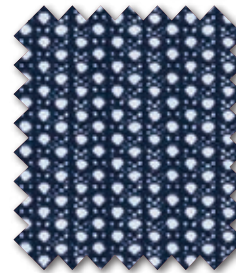
8244



8248



8223



8262





## MATERIALKUNDE

WISSENSWERTES AUF DER DIGITALEN PLATTFORM

## MATERIALS SCIENCE

USEFUL INFORMATION ON THE DIGITAL PLATFORM



## INFORMATIONS SUR LES MATÉRIAUX

INFORMATIONS UTILES SUR LA PLATEFORME NUMÉRIQUE

## INFORMACIÓN DE MATERIALES

INFORMACIÓN ÚTIL EN LA PLATAFORMA DIGITAL

D

### NETZE GESTRICKT

100 % Polyester

Gewicht  
260–290g/St.

Scheuerprüfung  
EN ISO 12947–2  
min. 40.000 Touren

Lichtechtheit  
5 EN ISO 105B 02

Reibechtheit  
4 EN ISO 105X–12

GB

### MESHES KNITTED

100 % Polyester

Weight  
260–290g/pc.

Abrasion test  
EN ISO 12947–2  
min. 40.000 cycles

Light fastness  
5 EN ISO 105B 02

Fastness to rubbing  
4 EN ISO 105X–12

F

### MAILLES

100 % Polyester

Poids  
260–290g/résille

Test d'abrasion Martindale  
EN ISO 12947–2  
min. 40.000 tours

Résistance à la lumière  
5 EN ISO 105B 02

Résistance au frottement  
4 EN ISO 105X–12

ES

### REDES DE MALLA

100 % Poliéster

Peso  
260–290g/pieza

Test de desgaste por fricción  
Martindale EN ISO 12947–2  
min. 40.000 Revoluciones

Resistencia a la luz  
5 EN ISO 105B 02

Resistencia a la fricción  
4 EN ISO 105X–12